

4

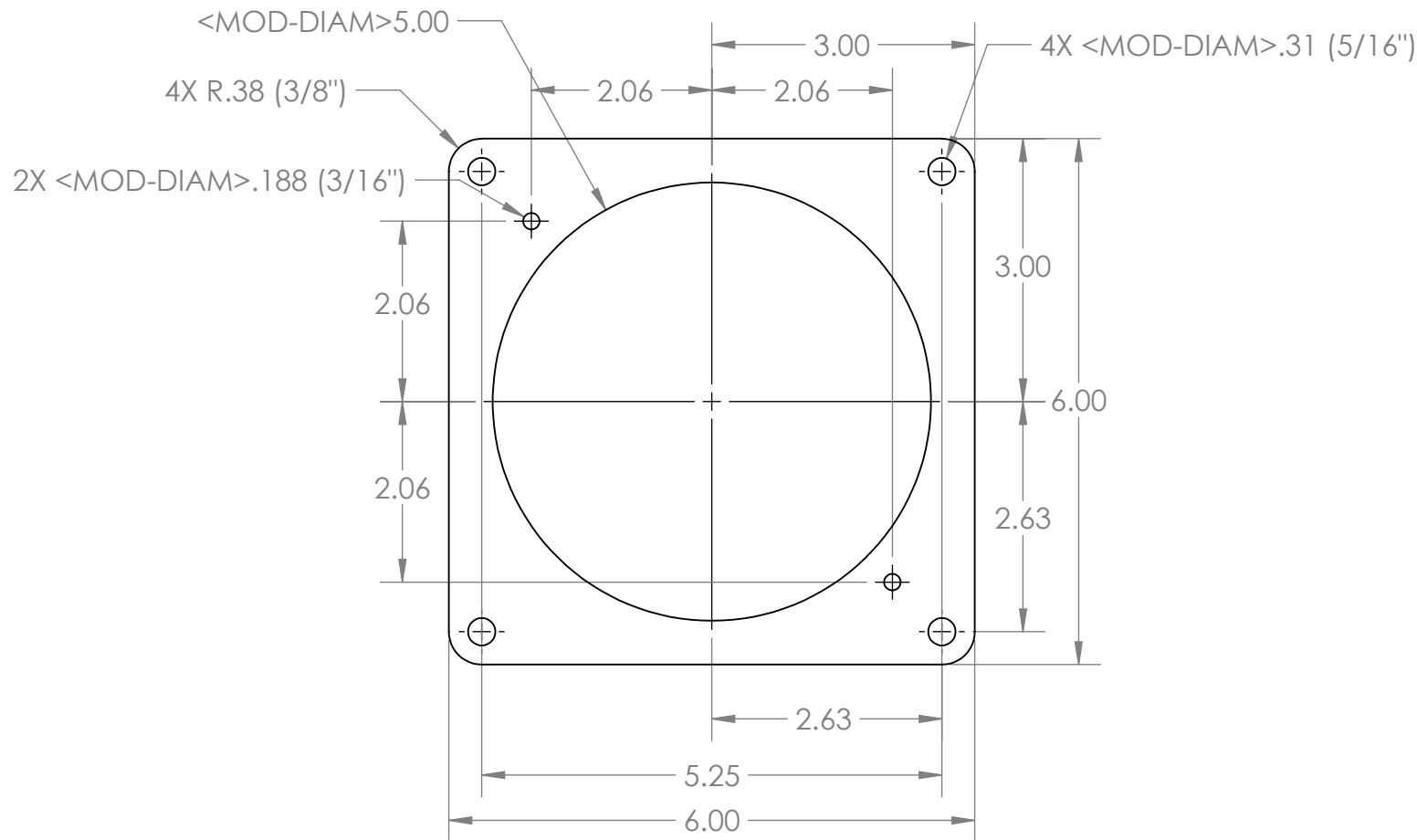
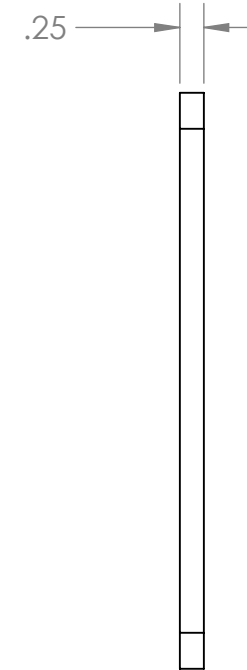
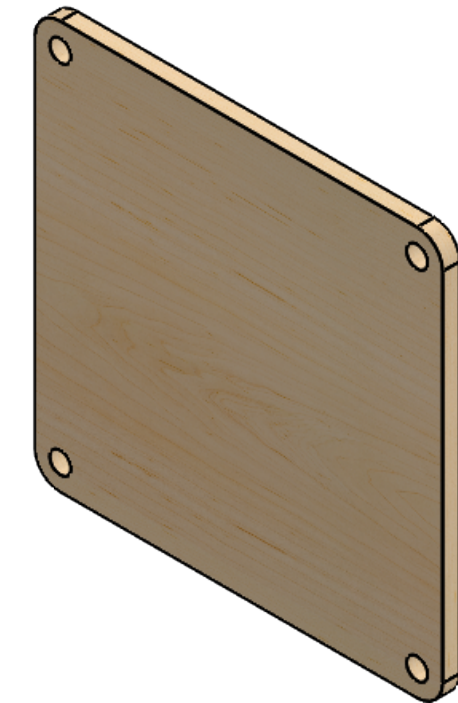
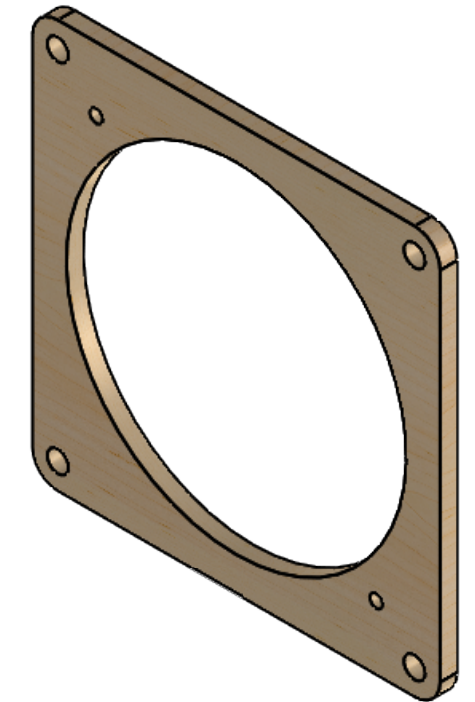
3

2

1

NOTES:

1. CUT A 4' X 8' X 1/4" SHEET OF PLYWOOD INTO 6" STRIPS ON A TABLE SAW.
2. CUT 6" SQUARES OUT OF THE 6" STRIPS TO PRODUCE 104 ~ 128 SQUARES.
3. RADIUS ALL FOUR CORNERS OF EACH SQUARE, AS DIMENSIONED.
4. DRILL FOUR 5/16" HOLES IN EACH CORNER OF EACH SQUARE, AS DIMENSIONED.
5. HALF OF THE SQUARES ARE COMPLETE, CONTINUE WORKING THE REMAINING SQUARES.
6. DRILL TWO 3/16" HOLES IN THE REMAINING SQUARES.
7. PRODUCE A 5" HOLE, IN THE REMAINING SQUARES, WITH A HOLE SAW OR RECIPROCATING SAW.



**PROPRIETARY AND CONFIDENTIAL**  
 THE INFORMATION CONTAINED IN THIS DRAWING IS THE SOLE PROPERTY OF LOTUS EDUCATION & ARTS FOUNDATION. ANY REPRODUCTION IN PART OR AS A WHOLE WITHOUT THE WRITTEN PERMISSION OF LOTUS EDUCATION & ARTS FOUNDATION IS PROHIBITED.

|                                                |                       |                                                                                                                               |  |                 |                      |
|------------------------------------------------|-----------------------|-------------------------------------------------------------------------------------------------------------------------------|--|-----------------|----------------------|
|                                                |                       | UNLESS OTHERWISE SPECIFIED:                                                                                                   |  | NAME            | DATE                 |
|                                                |                       | DIMENSIONS ARE IN INCHES<br>TOLERANCES:<br>FRACTIONAL 1/32"<br>ANGULAR: MACH BEND<br>TWO PLACE DECIMAL<br>THREE PLACE DECIMAL |  | DRAWN           | REMY PAGE 10/25/2020 |
|                                                |                       | INTERPRET GEOMETRIC TOLERANCING PER:                                                                                          |  | CHECKED         |                      |
|                                                |                       | MATERIAL<br>PLYWOOD                                                                                                           |  | ENG APPR.       |                      |
|                                                |                       | FINISH<br>N/A                                                                                                                 |  | MFG APPR.       |                      |
| NEXT ASSY                                      | USED ON               |                                                                                                                               |  | Q.A.            |                      |
| APPLICATION                                    |                       | DO NOT SCALE DRAWING                                                                                                          |  | COMMENTS:       |                      |
|                                                |                       |                                                                                                                               |  |                 |                      |
| TITLE:<br><b>Top and Bottom</b><br><b>5.25</b> |                       |                                                                                                                               |  |                 |                      |
| SIZE<br><b>B</b>                               | DWG. NO.<br><b>02</b> |                                                                                                                               |  | REV<br><b>A</b> |                      |
| SCALE: 1:2                                     |                       | WEIGHT: 0.07                                                                                                                  |  | SHEET 1 OF 1    |                      |

4

3

2

1

B

B

A

A

4

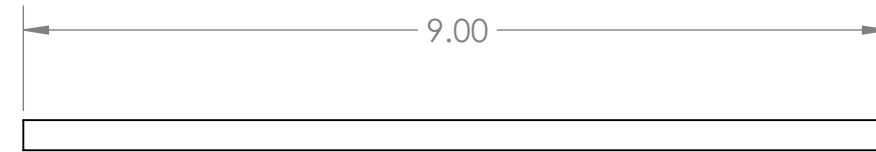
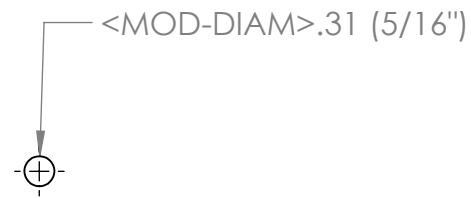
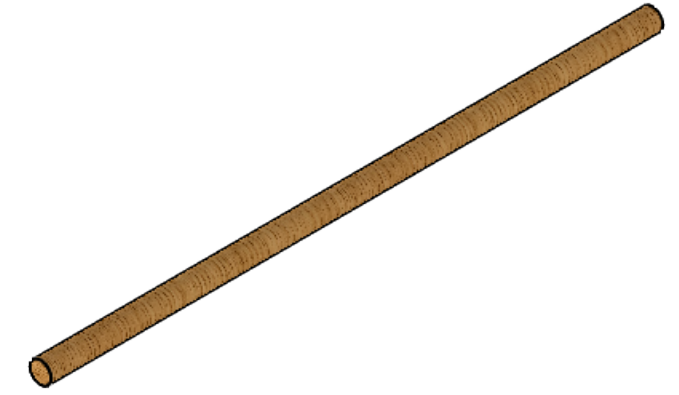
3

2


1

NOTES:

- 1. TO MAKE 104 ~ 128 LANTERS: CUT 208 ~ 256 DOWELS AS DIMENSIONED.
- 2. LIGHTLY SAND AND/OR REMOVE ANY WOOD CHIPS FROM THE ENDS OF EACH DOWEL.



**PROPRIETARY AND CONFIDENTIAL**  
 THE INFORMATION CONTAINED IN THIS DRAWING IS THE SOLE PROPERTY OF LOTUS EDUCATION & ARTS FOUNDATION. ANY REPRODUCTION IN PART OR AS A WHOLE WITHOUT THE WRITTEN PERMISSION OF LOTUS EDUCATION & ARTS FOUNDATION IS PROHIBITED.

|             |         |                                                                                                                               |  |                      |           |                                                                                       |  |
|-------------|---------|-------------------------------------------------------------------------------------------------------------------------------|--|----------------------|-----------|---------------------------------------------------------------------------------------|--|
|             |         | UNLESS OTHERWISE SPECIFIED:                                                                                                   |  | NAME                 | DATE      |  |  |
|             |         | DIMENSIONS ARE IN INCHES<br>TOLERANCES:<br>FRACTIONAL 1/32"<br>ANGULAR: MACH BEND<br>TWO PLACE DECIMAL<br>THREE PLACE DECIMAL |  | DRAWN                | REMY PAGE |                                                                                       |  |
|             |         |                                                                                                                               |  | CHECKED              |           | TITLE:<br><h1 style="text-align: center;">Dowel 8.5</h1>                              |  |
|             |         |                                                                                                                               |  | ENG APPR.            |           |                                                                                       |  |
|             |         |                                                                                                                               |  | MFG APPR.            |           |                                                                                       |  |
|             |         |                                                                                                                               |  | Q.A.                 |           | SIZE <b>B</b> DWG. NO. <b>01</b> REV <b>A</b>                                         |  |
|             |         |                                                                                                                               |  | COMMENTS:            |           |                                                                                       |  |
| NEXT ASSY   | USED ON | MATERIAL<br><b>WOOD DOWEL</b>                                                                                                 |  |                      |           | SCALE: 1:2 WEIGHT: 0.01 SHEET 1 OF 1                                                  |  |
| APPLICATION |         | FINISH<br><b>N/A</b>                                                                                                          |  | DO NOT SCALE DRAWING |           |                                                                                       |  |

4

3

2

1

B

B

A

A

4

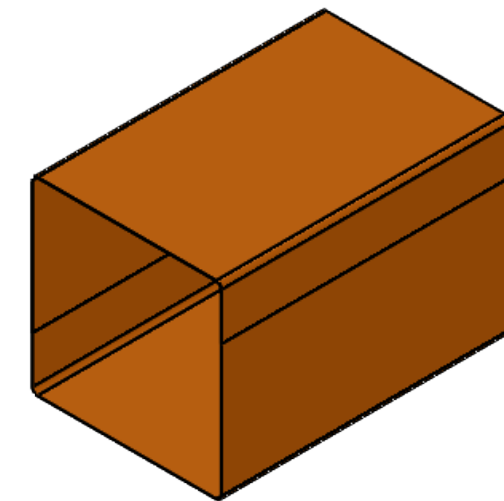
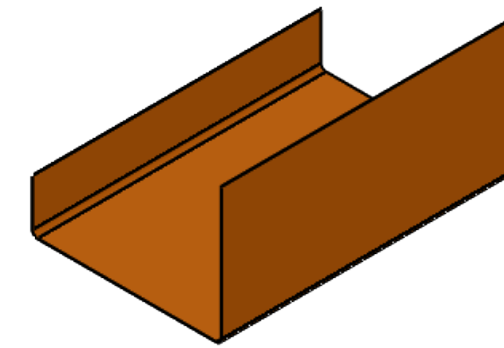
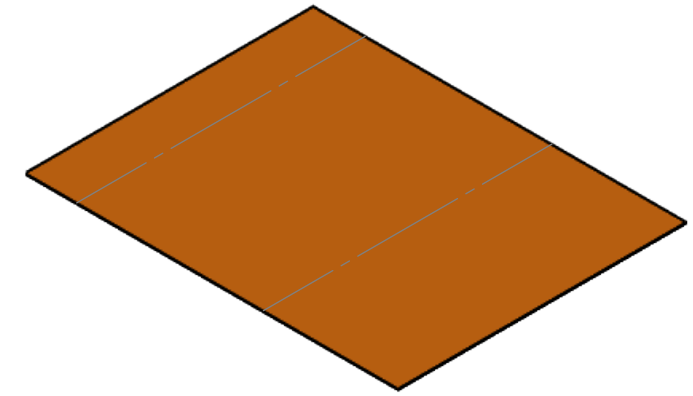
3

2

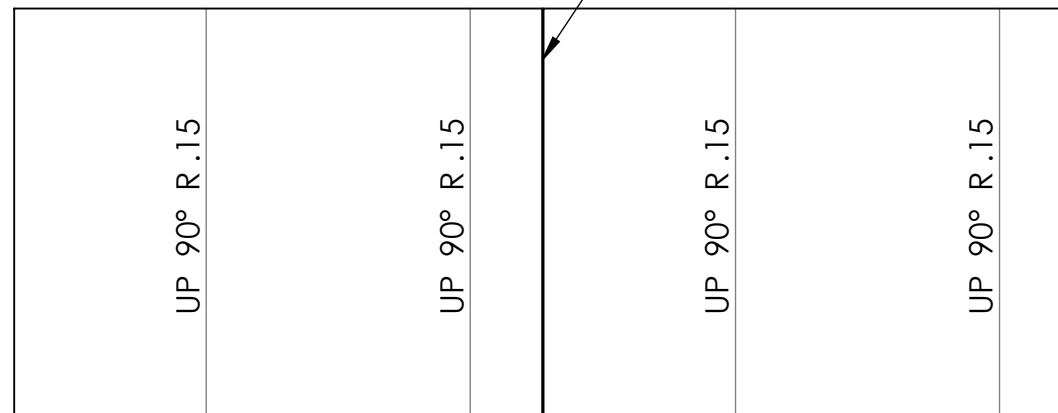
1

NOTES:

- 1. TAPE TWO 8.5" X 11" SHEETS OF PAPER END TO END TO MAKE ONE 8.5" x 22" PAPER ASSEMBLY.
- 2. INDIVIDUALIZE CREATIVE EXPRESSION THROUGH PATTERNS OF COLORFUL DRAWING, SCISSOR CUTS, LEAF IMPRINTINGS, AND/OR COLORFUL PAPER.
- 3. TO MAKE 104 ~ 128 LANTERNS: 208 ~ 256 PAGES OF PAPER ARE REQUIRED.



TAPE TWO SHEETS TOGETHER,  
END TO END, ON ONE SIDE ONLY




B

B

A

A

**PROPRIETARY AND CONFIDENTIAL**  
THE INFORMATION CONTAINED IN THIS DRAWING IS THE SOLE PROPERTY OF LOTUS EDUCATION & ARTS FOUNDATION. ANY REPRODUCTION IN PART OR AS A WHOLE WITHOUT THE WRITTEN PERMISSION OF LOTUS EDUCATION & ARTS FOUNDATION IS PROHIBITED.

|             |         |                                                                                                                               |  |           |           |                                                                                                                                 |                                                 |
|-------------|---------|-------------------------------------------------------------------------------------------------------------------------------|--|-----------|-----------|---------------------------------------------------------------------------------------------------------------------------------|-------------------------------------------------|
|             |         | UNLESS OTHERWISE SPECIFIED:                                                                                                   |  | NAME      | DATE      | <br><b>Titled Paper</b><br><b>8.5 x 22</b> |                                                 |
|             |         | DIMENSIONS ARE IN INCHES<br>TOLERANCES:<br>FRACTIONAL 1/32"<br>ANGULAR: MACH BEND<br>TWO PLACE DECIMAL<br>THREE PLACE DECIMAL |  | DRAWN     | REMY PAGE |                                                                                                                                 |                                                 |
|             |         | INTERPRET GEOMETRIC TOLERANCING PER:                                                                                          |  | CHECKED   |           |                                                                                                                                 | TITLE:<br><b>Taped Paper</b><br><b>8.5 x 22</b> |
|             |         | MATERIAL                                                                                                                      |  | ENG APPR. |           |                                                                                                                                 |                                                 |
|             |         | FINISH                                                                                                                        |  | MFG APPR. |           |                                                                                                                                 |                                                 |
| NEXT ASSY   | USED ON |                                                                                                                               |  | Q.A.      |           |                                                                                                                                 | SIZE <b>B</b> DWG. NO. <b>03</b> REV <b>A</b>   |
| APPLICATION |         | DO NOT SCALE DRAWING                                                                                                          |  | COMMENTS: |           |                                                                                                                                 | SCALE: 1:4 WEIGHT: SHEET 1 OF 1                 |

4

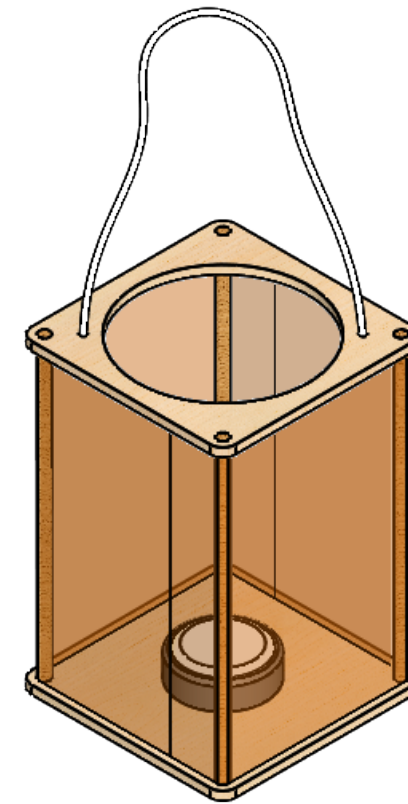
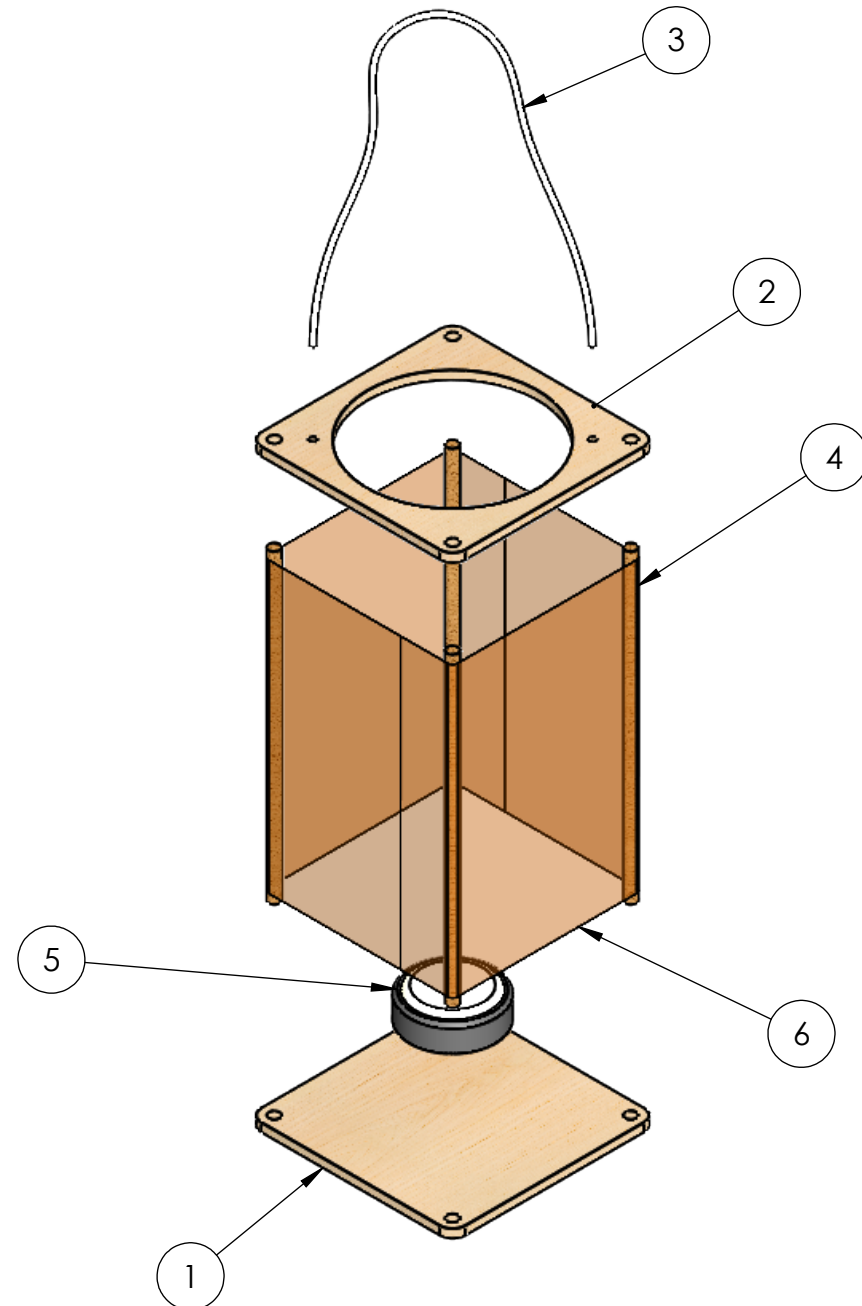
3

2

1


NOTES:

- 1. APPLY WOOD GLUE TO THE ENDS OF EACH DOWEL, TAP THEM INTO A TOP AND BOTTOM PLATE WITH A RUBBER Mallet.
- 2. TIE A KNOT AT ONE END OF THE ROPE, FEED IT UP THROUGH A ROPE HOLE, DOWN THROUGH THE OTHER ROPE HOLE, TIE A KNOT TO SECURE.
- 3. TAPE TWO 8.5 X 11 INCH SHEETS OF PAPER TOGETHER END TO END, WRAP THE TAPED ASSEMBLY AROUND THE LANTERN, TAPE THE ENDS TOGETHER TO SECURE.



| ITEM NO. | PART NUMBER          | DESCRIPTION                    | QTY. |
|----------|----------------------|--------------------------------|------|
| 1        | Bottom 5.25          |                                | 1    |
| 2        | Top 5.25             |                                | 1    |
| 3        | Rope 0.125           | MAKE LENGTH SPECIFIC TO PERSON | 1    |
| 4        | Dowel 8.5            |                                | 4    |
| 5        | LED Light            |                                | 1    |
| 6        | Paper Taped 8.5 x 22 |                                | 1    |

**PROPRIETARY AND CONFIDENTIAL**  
 THE INFORMATION CONTAINED IN THIS DRAWING IS THE SOLE PROPERTY OF LOTUS EDUCATION & ARTS FOUNDATION. ANY REPRODUCTION IN PART OR AS A WHOLE WITHOUT THE WRITTEN PERMISSION OF LOTUS EDUCATION & ARTS FOUNDATION IS PROHIBITED.

|                                                                                                                              |         |           |                      |                                                                                       |
|------------------------------------------------------------------------------------------------------------------------------|---------|-----------|----------------------|---------------------------------------------------------------------------------------|
| UNLESS OTHERWISE SPECIFIED:                                                                                                  |         | NAME      | DATE                 |  |
| DIMENSIONS ARE IN INCHES<br>TOLERANCES:<br>FRACTIONAL 1/32<br>ANGULAR: MACH BEND<br>TWO PLACE DECIMAL<br>THREE PLACE DECIMAL |         | DRAWN     | REMY PAGE 10/24/2020 |                                                                                       |
| INTERPRET GEOMETRIC TOLERANCING PER:                                                                                         |         | CHECKED   |                      | TITLE:                                                                                |
| MATERIAL                                                                                                                     |         | ENG APPR. |                      | <b>Lantern 8.5 x 22</b>                                                               |
| FINISH                                                                                                                       |         | MFG APPR. |                      | SIZE DWG. NO. REV                                                                     |
| NEXT ASSY                                                                                                                    | USED ON | Q.A.      |                      | <b>B</b> <b>04</b> <b>A</b>                                                           |
| APPLICATION                                                                                                                  |         | COMMENTS: |                      | SCALE: 1:4 WEIGHT: 0.45 SHEET 1 OF 1                                                  |
| DO NOT SCALE DRAWING                                                                                                         |         |           |                      |                                                                                       |

B

B

A

A